

Roosebeck™

FINE INSTRUMENTS

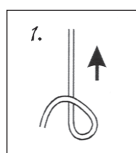
MINI HARPS



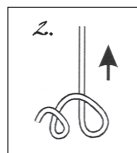
– OWNER'S GUIDE –

Replacing Strings

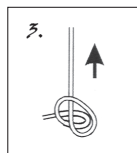
Thread a new string through the soundboard. Tie a knot in the bottom of the string (figs 1-7) and pull the string so the knot is tight against the inside of the soundboard.



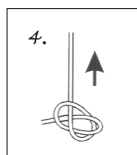
1. Make a big loop



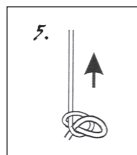
2. Make a small loop.



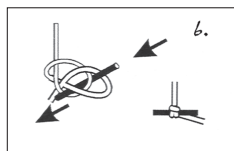
3. Insert the small loop into the big loop



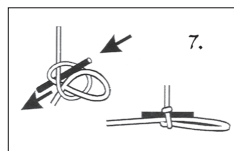
4. Carefully pull the string around the small loop



5. Tighten the string so the big loop closes over the small loop



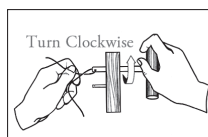
6. For a thin nylon string, reinforce the knot by weaving a brace through both parts of the knot and pull tight



7. For thicker gut strings, weave a brace through only one part of the knot and pull tight, leaving the slip knot

Secure to the Tuning Pin

With your tuning key, turn the pin until the hole is straight up and down. Thread the string through the tuning pin. Pull on the string as you turn the tuning key clockwise, turn until tight. Push the string in the groove of the bridge pin. As you turn, be sure the string is winding, without overlapping, towards the harp. When the proper pitch is reached, trim the end of the string to about half an inch.



Roosebeck™ Tuning

FINE INSTRUMENTS

As you turn the tuning pin, push inward. This will seat the pin securely in the arm of the harp. Only use enough pressure as necessary. New harps require frequent tunings to develop their bright voice. Begin by tuning the 'C' or red strings, then the 'F' or blue strings, finally, the clear strings. Use a piano or an electronic tuner as a reference for tuning; make sure you are in the correct octave.

Instrument Care

Adjacent strings may break if a missing string is not replaced promptly. Only use the strings suggested by the manufacturer. Improper strings may damage the harp.

Use a dry soft cloth for cleaning. Avoid extreme temperatures. Consider purchasing a soft, padded gig-bag in which to store and transport your harp.

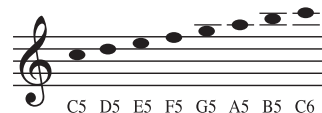
Accessories

Harp accessories are available at www.mid-east.com

Roosebeck Harp Scales



HLLA-K - Lily Harp, 8 Strings, No Levers - 15"
HP08 - Parisian Harp™, 8 Strings, No Levers - 15"



Use String Set RBSHS12F



HPBY - Baby Harp™, 12 Strings, No Levers - 21"



Use String Set RBSHS12F



MID-EAST®
est. 1973

www.mid-east.com

© Copyright 2017. Mid-East Mfg. Inc.
Mini Harps