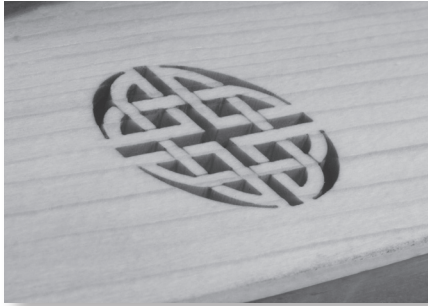


Choose from two sound hole designs.



Knotwork Rosette



F-hole

Roosebeck Dulcimer String Care

Replace all broken strings as soon as possible. Neighboring strings may break from the added tension if a broken string is not replaced promptly. Only use strings intended for the dulcimer as listed by the manufacturer. Improper strings may cause damage to the instrument. It's a good idea to wash your hands before playing your dulcimer. Hand creams may damage the strings and deaden the tone.

Accessories

String Sets, Noters, Cases and other accessories are available at www.mid-east.com

Instrument Care

Here are some simple tips to care for your dulcimer:

- Use a dry soft cloth for dusting
- Use a damp soft cloth for cleaning
- Avoid extreme temperatures
- Avoid extremely dry conditions
- Avoid direct sunlight
- Avoid using abrasives



MID-EAST
est. 1973

www.mid-east.com

© Copyright 2015. Mid-East Mfg. Inc.
Dulcimer

*Roosebeck*TM
FINE INSTRUMENTS

DULCIMER



– OWNER'S GUIDE –

Roosebeck Dulcimer

Before You Play

Dulcimers are de-tuned prior to shipping to reduce the chance of damage. Tuning adds tension and because of this, a new dulcimer may require frequent tunings in the first few weeks. Tonal stability will increase with age.

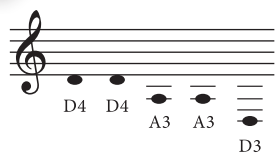
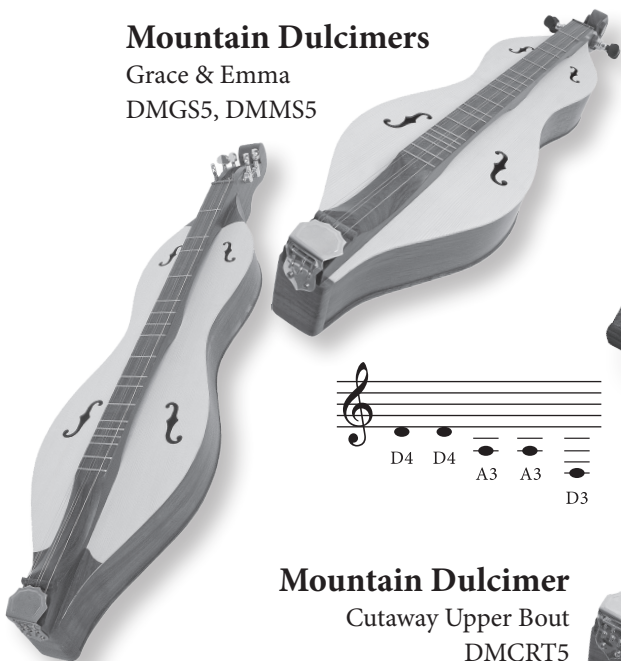
Tuning

When tuning, start with the thicker string which will sound the lowest note. Finish by tuning the 2-course, Melody Strings. These are the thinnest strings found close together. They will be the highest notes. When tuning, make sure you are in the correct octave, and be very careful not to over tighten, as strings are easily broken. Use a piano or electronic tuner for reference.

5-String Dulcimers 648mm ~ 25 1/2" Scale Length

Mountain Dulcimers

Grace & Emma
DMGS5, DMMS5



Mountain Dulcimer

Cutaway Upper Bout
DMCRT5



European Mountain Dulcimer

DME5

All 4 & 5-String Mountain Dulcimers have Vaulted Fretboards; providing a more reactive soundboard and more lively sound.

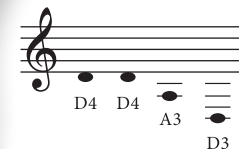
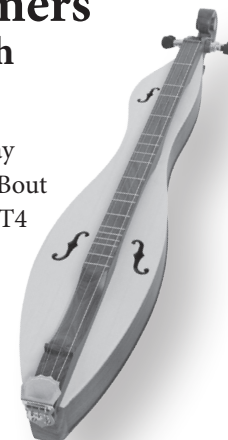
4-String Mountain Dulcimers

648mm ~ 25 1/2" Scale Length

Grace & Emma
DMGS4, DMGS4K,
DMDS4, DMDS4K



Cutaway
Upper Bout
DMCRT4



Emma with Cedar
Soundboard
DMMC4

4-String Wildwood & Trail Dulcimers

620mm ~ 24 1/2" Scale Length

Wildwood

DMWFSRT & DMWR



Trail Dulcimer

DMTLL4



For full selection go to
www.mid-east.com

3-String Trail Dulcimer

430mm ~ 17" Scale Length

Trail Dulcimer

DMTSL3
3 Strings

